






1



NSnappy® Installation Steps

-  **1 Install NSnappy® Hub Base Station**
Place the base station in a central location for optimal coverage.
-  **2 Attach the monitoring point stickers**
Place stickers to indicate the monitoring points (e.g. fridge doors).
-  **3 Install NSnappy® measuring devices**
First install wall bracets and then measuring devices.
Check the monitoring point list to place each device to correct place.
-  **4 Check the coverage**
Ensure all cold storage transmitters are reporting to NSnappy.

2

NSnappy® Hub Base station

- Place **as centrally as possible** in relation to the NSnappy devices.
- Preferably, **should not be installed on a metallic surface or near metal** as metal significantly weakens radio signals.
- **Requires a mobile network** to function properly.
- **Requires a continuous power supply**
 - Ensure that the power outlet is not, for example, behind a main switch.



A fully operational base station will have the following lights on:
Power, Network, LoRa, Service.

3

Installing Base station to wall

1. Mark two screw locations at approximately **170 cm height**
 - The screws should be placed at the positions indicated by the arrows in the picture on right
2. Drill holes to wall
 - To a depth of 30 mm using a 6 mm drill bit if using the included wall plugs
3. Install the base station so that
 1. **NSnappy text is facing the right way up**
 2. **Antennas are pointing upwards**
 3. **Antennas are securely attached to the base station**
4. Plug the power adapter into the wall socket



4

Installing Base station to flat surface

1. Place the base station on a flat surface at approximately **170 cm height**.
2. Position the base station's **antennas to point upwards**.
3. Ensure that the **antennas are securely attached** to the base station.
4. Plug the power adapter into the wall socket.



5

Attaching the Monitoring point stickers

Attach Monitoring point stickers to the designated monitoring points, for example, on the device door or side.

Monitoring points include:

- Cold storages
- Dishwashers
- Cooling cabinets



6

Installing the Wall brackets

1. Clean and dry the installation surface thoroughly.
 - The surface must be free of grease, moisture, ice, or dust.
 - In freezers, the installation surface is usually frosty. To ensure the wall bracket stays securely in place, dry and warm the surface by rubbing it with a dry paper towel, for example.
2. Remove the backing from the adhesive strip of the wall bracket.
3. Press the wall bracket firmly for at least 30 seconds .
4. You can secure the bracket with at least one screw at the bottom of the bracket. This is usually needed in freezers.

Always check the included monitoring point list to place Kide wall brackets correctly. If installed incorrectly, measurement data will appear under the wrong monitoring point in NSnappy.



Kide wall bracket



Wash wall bracket



Cool wall bracket

7

NSnappy® Kide

1. Install the Kide wall bracket.
 - See the good installation locations on next page.
2. Place the Kide measuring device into the wall brackets.
 1. Place the bottom part of the Kide transmitter into the wall bracket.
 2. Check that the NSnappy text is facing the right way up.
 3. Snap the top of the Kide transmitter into the wall bracket.

You can install any Kide measuring device into any Kide wall bracket. Only the wall bracket place matters!

The identifying serial number is located on the Kide wall bracket



Kide wall bracket

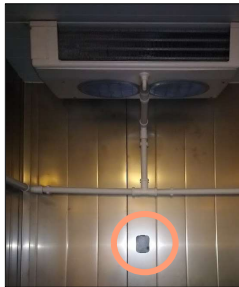


Kide measuring device



8

NSnappy® Kide installation locations



Large cold room / freezer

On the supply air side of the refrigeration unit



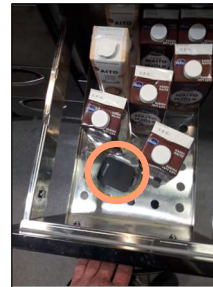
Upright cabinet

On the hinge side and as close to the center as possible



Double-door upright refrigerator / freezer

As close to the center as possible



Drawer or display case

Placed loosely among the products at the bottom of the drawer or display case



NOTE! The wall bracket must remain attached to the transmitter.

9

NSnappy® Cool

1. Install the Cool wall bracket.
2. Remove the rubber protective cap from the sensor and clean the sensor.
3. Snap the Cool transmitter's mount into place as in the picture.
4. Hang the Cool transmitter onto the Cool wall bracket using its mount.

The identifying serial number is located on the measuring device.



Cool transmitter's mount



Protective cap

If you have many Cool transmitters, check the monitoring point list to ensure you put the Cool to right place.



Cool wall bracket should be installed next to the control panel or side of the cooling cabinet.



Cool wall bracket

10

NSnappy® Wash

1. Install the Wash wall bracket.
2. Snap the measuring device into the Wash wall bracket.
 1. Place the bottom part of the Wash into the wall bracket.
 2. Check that the NSnappy text is facing the right way up.
 3. Snap the top of the Wash into the wall bracket.

NOTE! Do not install in a place that would prevent the dishwasher's hatch from opening.

If you have many Wash transmitters, check the monitoring point list to ensure you put the Wash to right place.



In rack conveyor dishwashers, the wall bracket of the Wash transmitter is installed at the loading end.



In hood type dishwashers, the wall bracket of the Wash transmitter is installed next to the machine's control panel.

The identifying serial number is located on the measuring device.



Wash measuring device



Wash wall bracket

NSnappy® Sense and Sense IR

Both Sense devices are ready to use without installation, but the initial connection to NSnappy may take a few minutes.

Remember to clean the probe of the NSnappy Sense before use.



The QR code and serial number can be found on the back of the device



NSnappy® Sense Probe Thermometer



NSnappy® Sense IR Infrared Thermometer

NSnappy® Hygi

The NSnappy® Hygi ATP luminometer is ready to use without installation.

Use the Hygi together with an ATP test swabs. ATP test swabs must be stored in a refrigerator and protected from light.

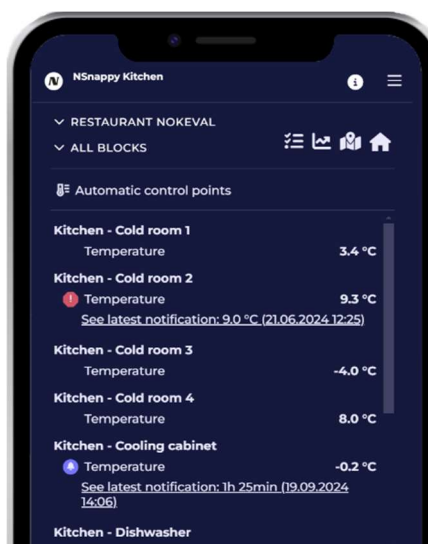


The QR code and serial number can be found on the back of the device

Checking the signal coverage of cold storage transmitters

After device installation, check from NSnappy that measurement data from the cold storage units is being sent to the monitoring points in NSnappy.

If no temperature data appears within an hour of installation, please contact our Customer Service.





NSnappy® Help Center

You can find instructions for using NSnappy at helpcenter.nsnappy.com.

Your login details for the Help Center have been sent to you by email.

Customer Service

support@nokeval.com

+358 3424 810